

Wide-Band Yagi Antenna Specifications
(PT-YAGI-10-N)

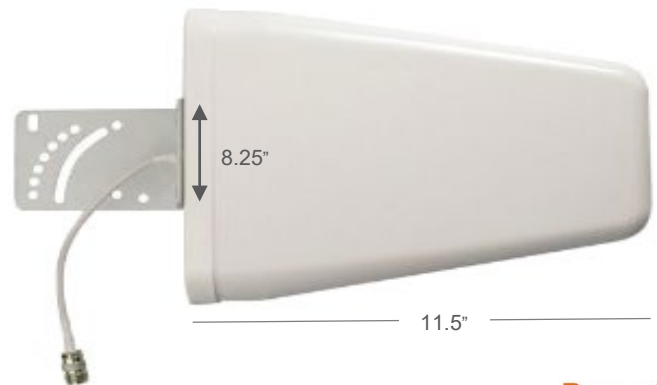
Frequency Range (Log-Periodic)	700 ~ 2700MHz 3G 4G LTE XLTE WiMax WiFi
Antenna Gain	10dBi
F/B Ratio dB	≥15
VSWR	≤1.5
Half-power beam width (°)	Horz:85° Ver:65°
Impedance	50 Ohms
Max Power	100 Watts
Polarization	Vertical
Radiation	Directional
Connector Type (s)	N-Female (Custom Connectors Available)
Mount Type(s)	Bracket Mount (Tilt-Bracket Hardware Included)
Case Material	ABS UV Protected – White
Dimensions	L 11.5" H 8.25" W 2.5"

Bracket Mount Yagi Antenna
Cellular 3G 4G LTE XLTE WiMax - All Carriers
WiFi - 2.4-2.5 GHz
Bracket Mount Hardware Included



Wide-Band Yagi Antenna

- **Log-Periodic**
Cellular 3G 4G LTE XLTE & 2.4GHz WiFi Bands
- **Multi-Function Antenna**
Compatible With ALL Cellular Carriers
- **Designed For Outside Use**
Weatherproof - ABS UV Protected



J-Pipe Mount
Sold Separately



System Protection Kits
Sold Separately



Antenna Coax
Sold Separately