

**Wide-Band Yagi Antenna Specifications**  
(PT-YAGI-12-N)

Frequency Range (Log-Periodic)	700 ~ 2700MHz 3G 4G LTE XLTE WiMax WiFi
Antenna Gain	12dBi
F/B Ratio dB	≥18
VSWR	≤ 2.0
Half-power beam width (°)	Horz:63 Ver:49
Impedance	50 Ohms
Max Power	100 Watts
Polarization	Vertical
Radiation	Directional
Connector Type (s)	N-Female (Custom Connectors Available)
Mount Type(s)	Bracket Mount (Tilt-Bracket Hardware Included)
Case Material	ABS UV Protected – White
Dimensions	L 17.6" H 8.25" W 2.5"

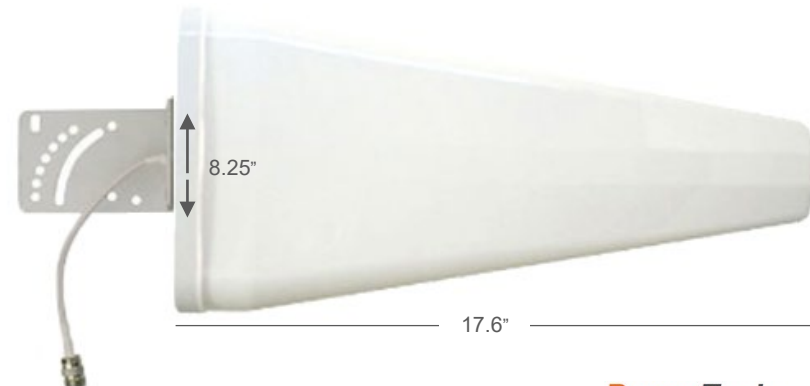
**Bracket Mount Yagi Antenna**

Cellular 3G 4G LTE XLTE WiMax - All Carriers  
WiFi - 2.4-2.5 GHz  
Bracket Mount Hardware Included



**Wide-Band Yagi Antenna**

- **Log-Periodic**  
Cellular 3G 4G LTE XLTE & 2.4GHz WiFi Bands
- **Multi-Function Antenna**  
Compatible With ALL Cellular Carriers
- **Designed For Outside Use**  
Weatherproof - ABS UV Protected



J-Pipe Mount  
Sold Separately



System Protection Kits  
Sold Separately



Antenna Coax  
Sold Separately

